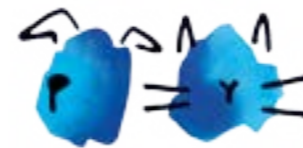


Programme Overview



BATTERSEA
Academy

WELCOME TO BATTERSEA ACADEMY

Battersea has developed several training modules aimed at managers and staff working in animal welfare organisations. This programme is aimed at organisations working with cats.

The programme, developed and facilitated by our expert staff, comprises of a mixture of classroom, workshop, experiential and reflective training activities.

Our aim is to provide delegates with the opportunity to think about how their own organisation works, what could be changed and how that change could be implemented.

Programme Aim

“To enable every rescue to do the best with what they have”

Programme Outcomes

By the end of this programme you will be able to:

Describe the animal issues and problems in your catchment area and the impact of these issues on animal welfare, the environment and human society.

Describe how metrics can help you to make decisions to run your shelter more effectively.

Describe the framework of ethical decision making, apply them to a decision-making process and demonstrate the rationale behind deciding.

Identify opportunities to improve your care and rehoming practices.

Identify the change(s) you could make and create a plan for change.



Modules

Module 1 Managing your Organisation

This module looks at the wider problem of the unwanted animal population in your area and considers how your vision and operating model helps you to make a positive change.

Through a series of facilitated discussions and activities you will be able to consider how your organisation's effectiveness and sustainability can be influenced by its design, policies and management.

The topics that the module will cover are:

- The sustainable organisation
- The animal journey
- Shelter metrics
- Managing your intake

Module 2 Ethical Decision Making

This short module introduces the subject of ethical decision making through a consideration of ethical frameworks and the value of animal life.

This is a classroom-based module, comprising of presentations and facilitated conversations that will enable you to consider how to apply ethical reasoning to the work that you do.

Module 3 Introduction to Cat Welfare & Behaviour

This module covers the history of cat domestication and how this comparatively limited evolution is relevant to every aspect of the animal's journey whilst in your care. The aim of this module is to enable you to identify improvements in your organisation's practises that will have a positive impact on the well-being of your animals.

Delivered as a set of practical workshops, facilitated discussions and activities.

The topics that the module will cover are:

- Introduction to cats: what is a cat?
- Cat behaviour and body language

Modules

Module 4 Cat Intake

This short module introduces how best cat welfare and behaviour practice can lead to successful rehoming at the point of intake. The aim of this module is to enable you to ascertain methods of improving your intake service so that cats' needs are met whilst their owners- your customers- are able to provide the most accurate and insightful details about their cat's history that creates the best possible platform for successful and bespoke care and rehoming.

Module 5 A Day in the Life of...

This module will enable delegates to experience some of the day-to-day practises of our Battersea staff. The aim of this module is to provide delegates with an experience of working within the Battersea environment and consider how they might identify and implement improvements in their own practises.

This is an experiential module and the morning will take place in the cattery environment. The day will consist of shadowing (real life observation), practical exercises and facilitated conversations.

The topics that the module will cover are:

- Welfare friendly husbandry and hygiene
- Stress management
- Cat temperament
- Cat welfare





Modules

Module 6 Outcome Planning and Rehoming

This module will draw on the assessment learnings from Module 4 and provide an opportunity for discussion about the possible outcomes for cats following behavioural and medical assessments. How to create rehoming profiles, identify the most suitable owners and how to bring those customers to your door, is covered in this module that will aim to identify improvements in your rehoming processes.

The topics that the module will cover are:

- Management and decision making to improve cat welfare
- Rehoming – pet homes (cat perspective)
- Rehoming – pet homes (customer perspective)
- Rehoming – non-pet outlets

Module 7 Implementing Change

This module focuses on how to implement change and how you know that the change has been successful. This work draws on the delegate's experience throughout the week, aiming to support the planning and implementation of real change in their own organisation.

This is a classroom-based module consisting of practical exercises and facilitated conversations.

The topics that the module will cover are:

- Identifying change
- Planning and measuring change