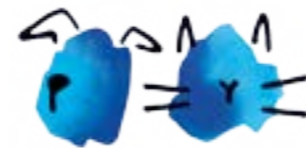


12 April  
Programme Overview



**BATTERSEA**  
Academy



## Introduction to Cat Behaviour and Welfare

This one-day workshop introduces key areas in cat welfare and behaviour in a rescue environment. It is an interactive workshop made up of classroom presentations, facilitated conversations, practical exercises and real-life observations.

If you would like to attend this programme please email [academy@battersea.org.uk](mailto:academy@battersea.org.uk) or register your interest here: [battersea.org.uk/register-your-interest-battersea-academy](https://battersea.org.uk/register-your-interest-battersea-academy)

### What will be covered:

- the different emotional states of cats
- managing stress in the cattery environment
- the principles of cat friendly interactions
- how to promote and assess good welfare

### By the end of this programme you will be able to:

Describe and identify different behavioural strategies used by cats and the behaviour, posture and body language associated with different emotions in cats.

List the main sources of stress for cats in a cattery environment in order to identify appropriate stress management techniques.

Describe and identify different stress management techniques and demonstrate the key principles of cat friendly interactions.

Explain the concept of cat welfare and what is required to promote good welfare.

Recognise how a traffic light system can support the assessment of welfare and demonstrate how to utilise it.